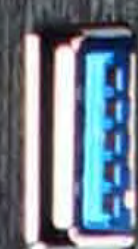




IN WIN

305

User Manual





Product Story

The IN WIN team presents the 305, a simple, yet elegant computer chassis crafted from steel and tempered glass. While the 305 is a stunning visual display, it's because of the quality and skilled engineering that pieced together such a fine piece of computer hardware.

Specifications

Model	305
Color	Black, White
Case Type	Mid Tower
Case Material	Tempered Glass, SECC
M/B Compatibility	12" x 10.7" ATX, Micro-ATX, Mini-ITX
Expansion Slots	PCI-E X 7
Maximum Compatibility	VGA Card Length:350mm CPU Heatsink Height :160mm
Front Ports	2 x USB 3.0 2 x USB 2.0 HD Audio
Internal Drive Bays	2 x 3.5" 2 x 2.5" Pre-installed (Max. up to 3 bays)
Thermal Solution Compatibility	1 x 120mm Rear Fan / 120mm Radiator 3 x 120mm Top Fan / 360mm Radiator 3 x 120mm Bottom Fan
Power Supply Compatibility	PSII: ATX12V -Length: 200mm Maximum
Product Dimension (H x W x D)	500mm x 248mm x 484mm 19.6" x 9.7" x 19"
	500mm x 248mm x 485mm 19.6" x 9.7" x 19"
Package Dimension (H x W x D)	335mm x 610mm x 572mm 13.1" x 24" x 22.5"
Net Weight	11.53kg / 25lb
Gross Weight	13.42kg / 29lb

* In Win products comply with RoHS regulation.
* Specifications may vary based on different regions.
* Pre-installed glass panel. Extra fee for closed panel.



1



2



3

1

305 Chassis

2

QR Code Card

3

Accessories Bag



a



b



c



d



e



g



f



h



Package Content

a

Motherboard Stand-off x 7

b

Motherboard Stand-off Socket x 1

c

Hexagon Head Screws x 18

d

2.5" HDD Screws x 18

e

3.5" HDD Screws x 10

f

Cable Tie x 10

g

Water-cooling System Washer x 8

h

Graphics Card Holder x 1

Case Structure



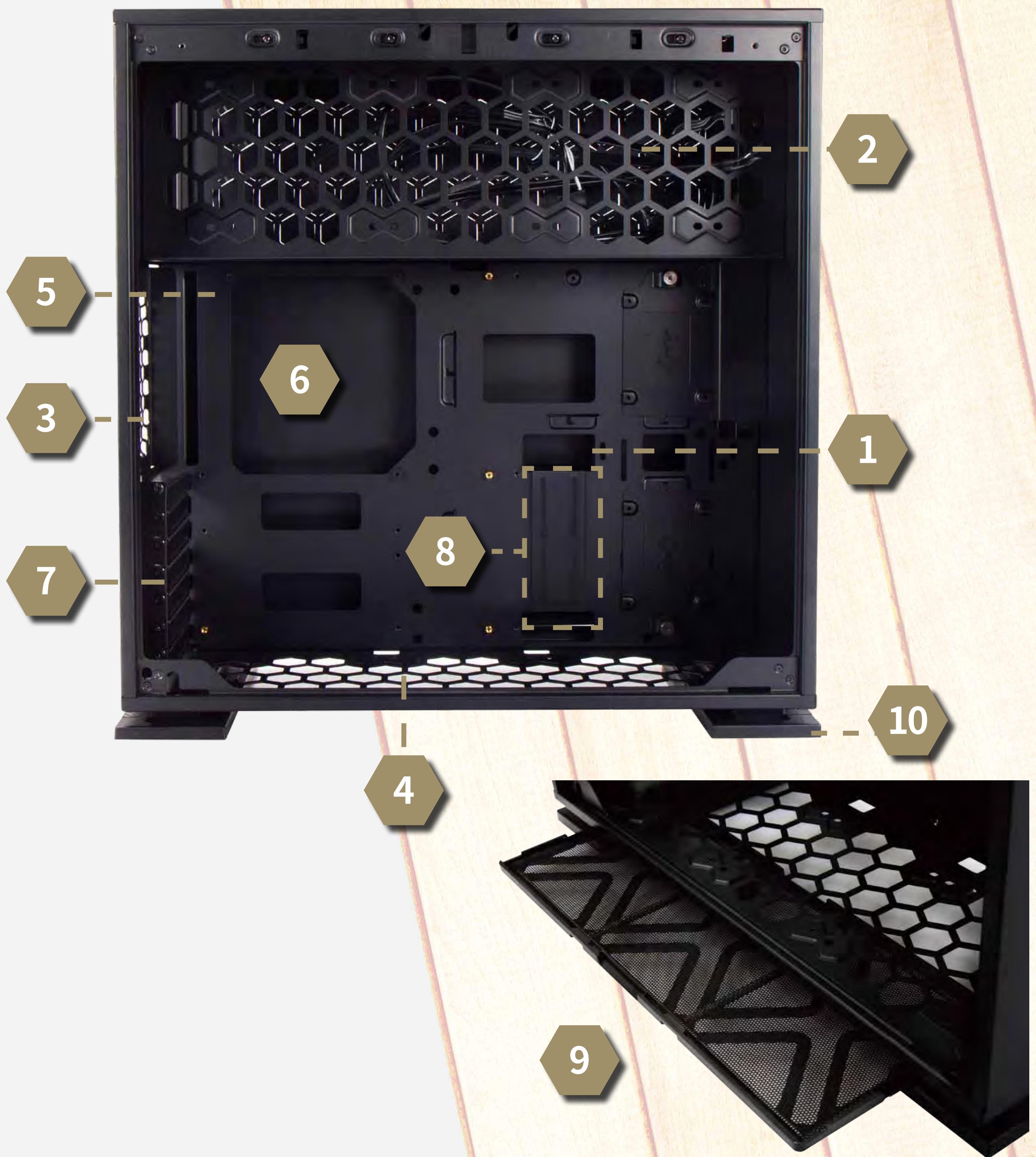
- Power Button
- HDD/Power LED Indicator
- USB 3.0 Ports
- Audio Ports (Earphone and Microphone)
- USB 2.0 Ports



Power Supply Mounting Area



3.5" Drive Bay



Case Structure

- 1 2.5" Drive Bay
- 2 Top Fan/ Radiator Mounting Area
- 3 Rear Fan/ Radiator Mounting Area
- 4 Bottom Fan Mounting Area
- 5 Motherboard Mounting Area
- 6 CPU Cooler Installation Cut-Out Hole
- 7 PCI-E Expansion Slot
- 8 Extra PCI-E Supporting Mounting Hole
- 9 Fan Dust Filter
- 10 Shock-Proof Stand

Installation Guide

(Please follow the related chapters to assemble)



Opening the Chassis

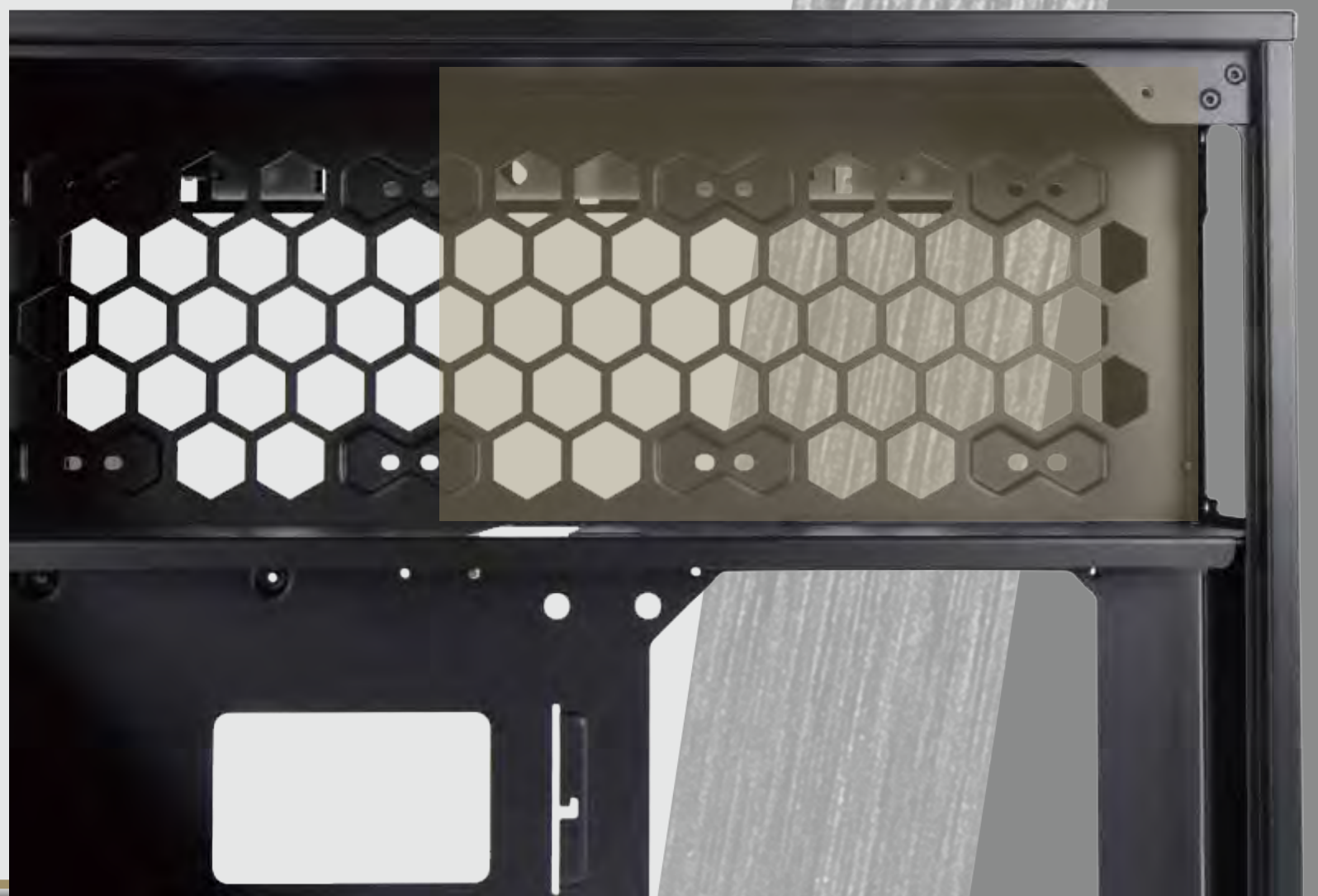
For Tempered Glass side panel, please remove by pressing the handle on top of panel.

1

Power Supply Installation

Parts Required:
Hexagon Head Screw.
Power supply can be mounted on the top bracket.

2



Motherboard Installation

Parts Required:
Motherboard Stand-Off, Motherboard Stand-Off Socket, Hexagon Head Screws

3

Installation Guide

(Please follow the related chapters to assemble)

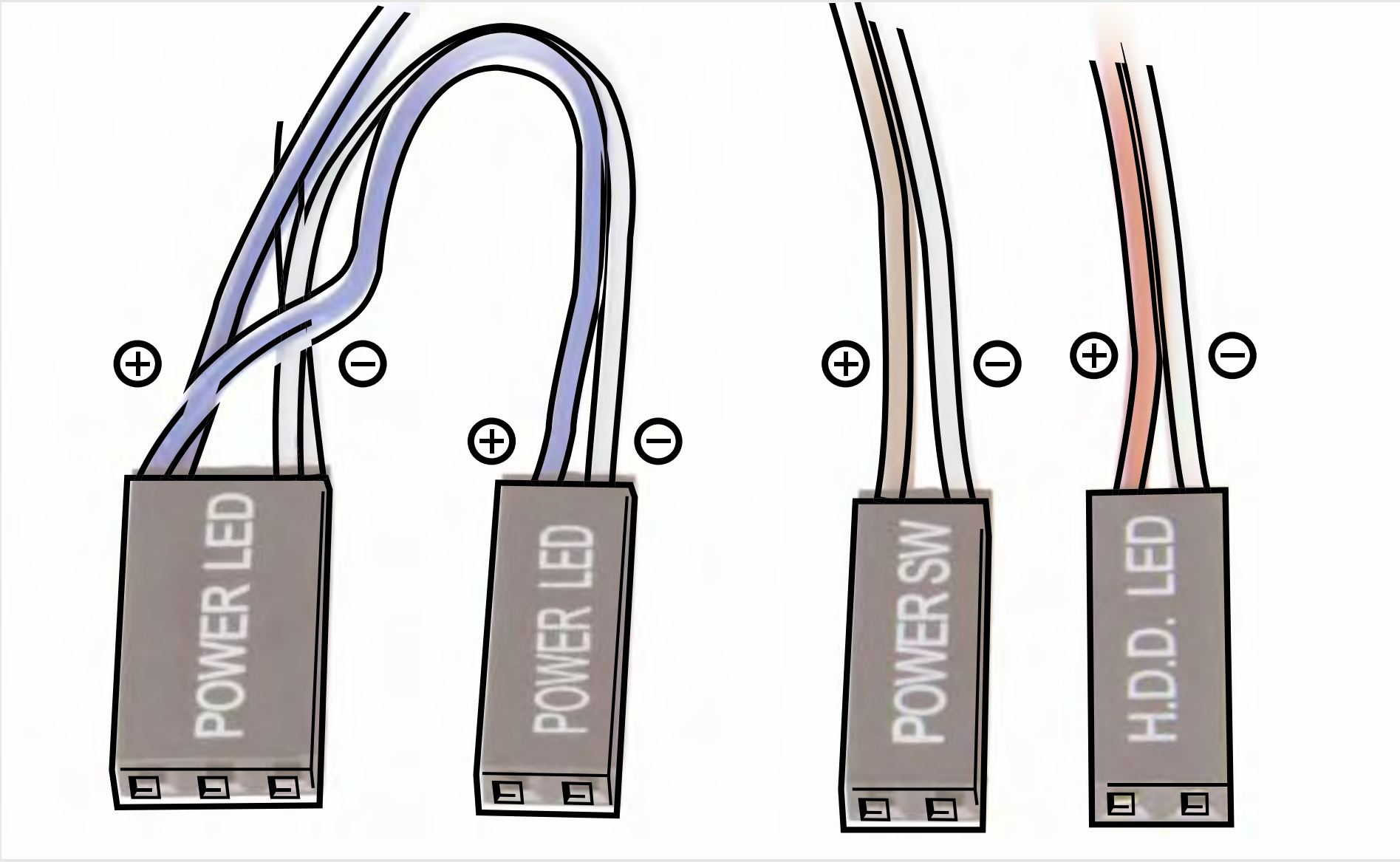
4

Expansion Card Installation

Parts Required: Hexagon Head Screws, Graphics Card Holder



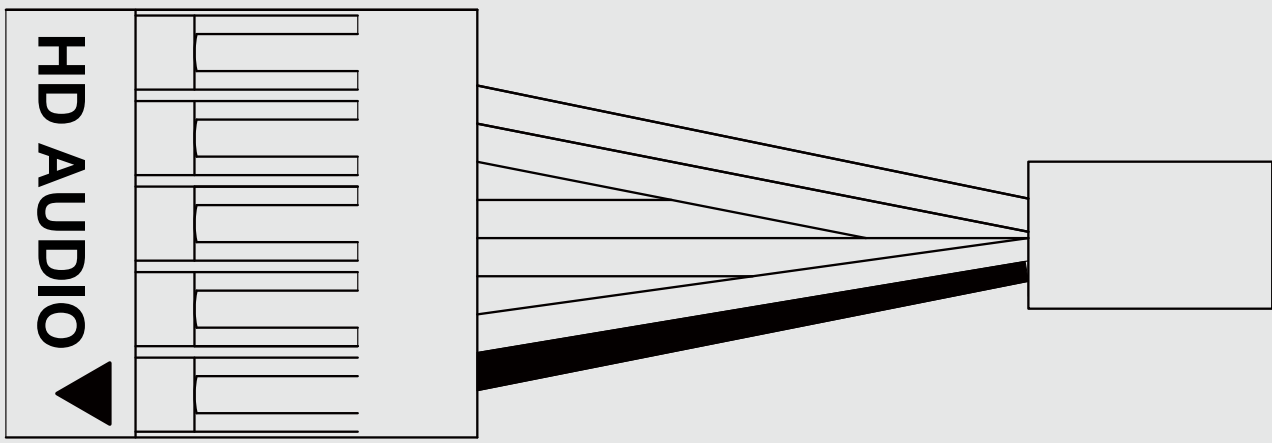
5 I/O Wires Installation



POWER LED (Depend On Motherboard) POWER SW H.D.D LED

HD Audio Header

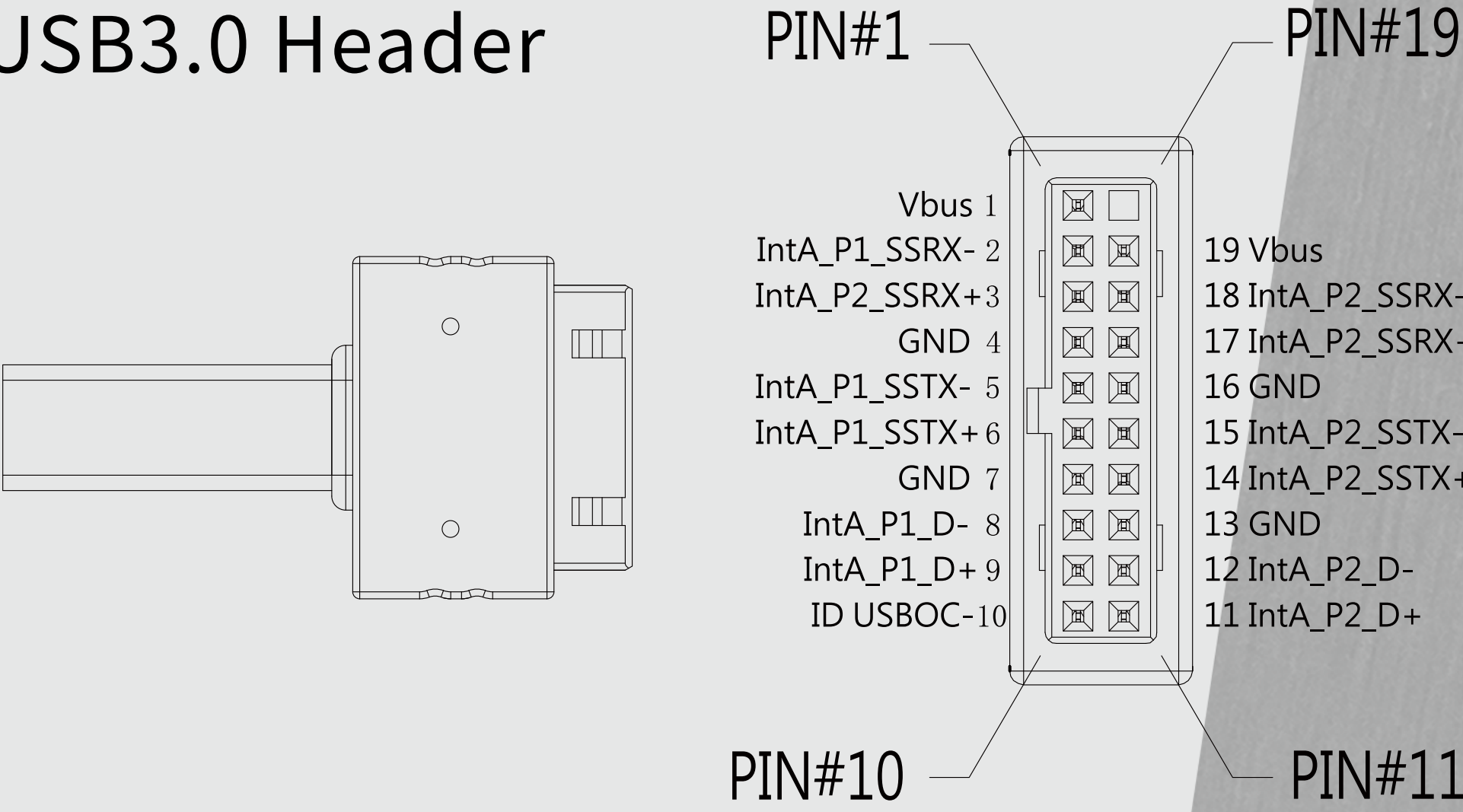
PORT2_2	Blue	10	9	Brown	SENCE2_R
SENSE_SEND	Purple	8	7		Key
PORT2_R	Yellow	6	5	Green	SENSE1_R
PORT1_R	White	4	3	Orange	PRESENCE#
PORT1_L	Red	2	1	Black	GND



USB2.0 Header

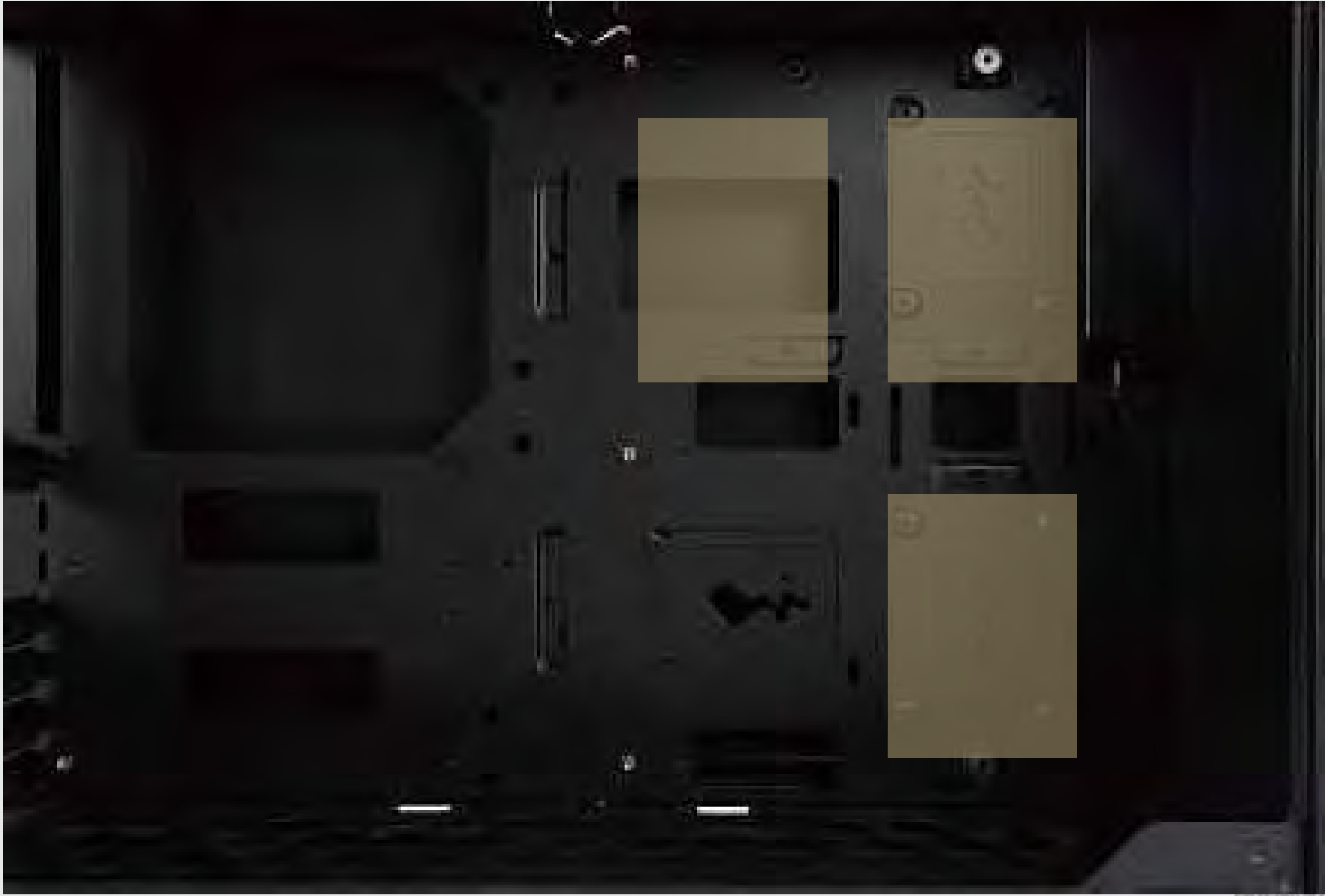
RED	VCC1	1	2	VCC2	RED
White	D1 -	3	4	D2-	White
Green	D1 +	5	6	D2+	Green
Black	GND	7	8	GND	Black
NC	NC	9	10	KEY	KEY

USB3.0 Header



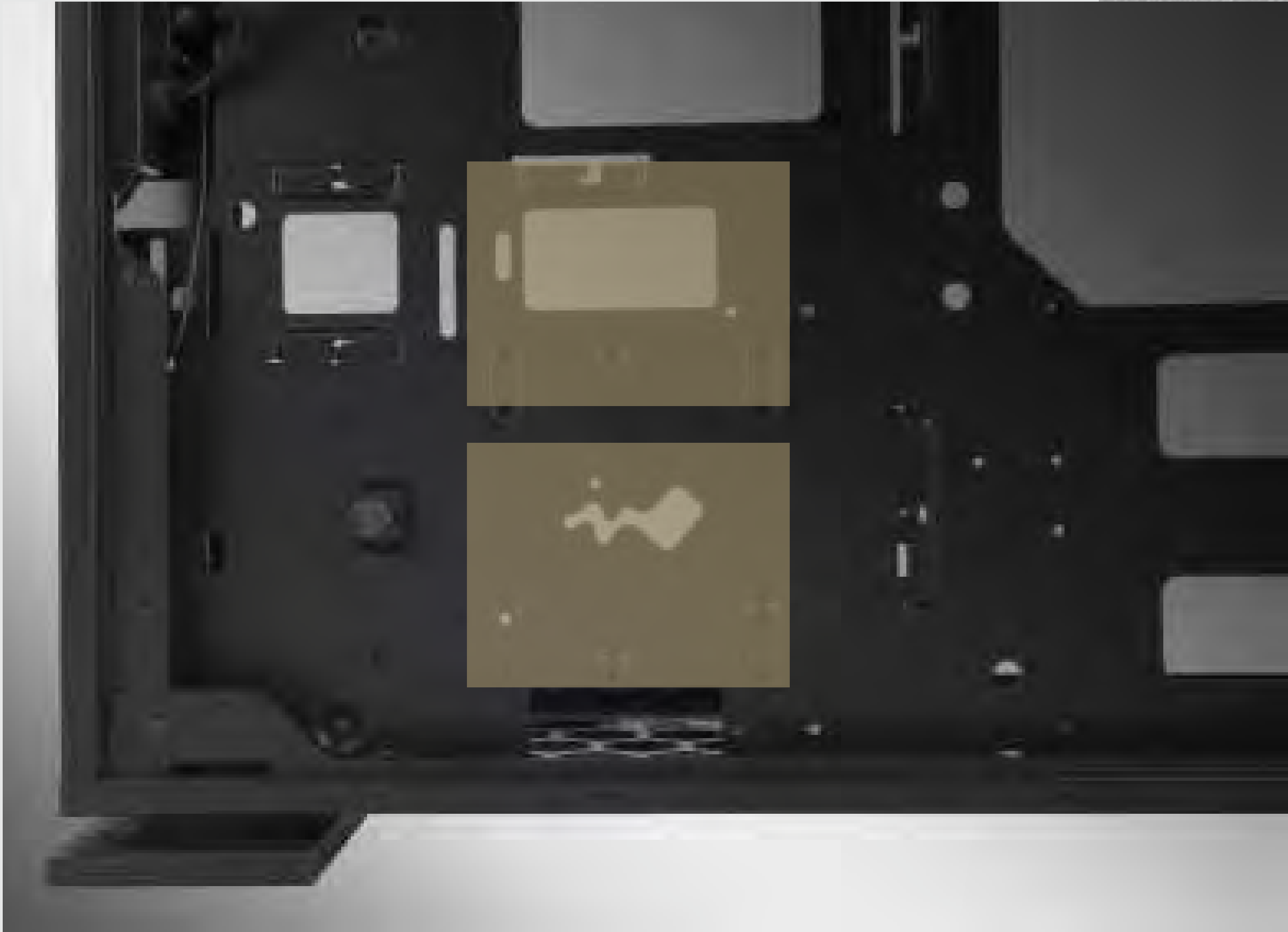
2.5" Drive Bays Installation

Parts Required: 2.5" HDD Screws



3.5" Drive Bays Installation

Parts Required: 3.5" HDD Screws

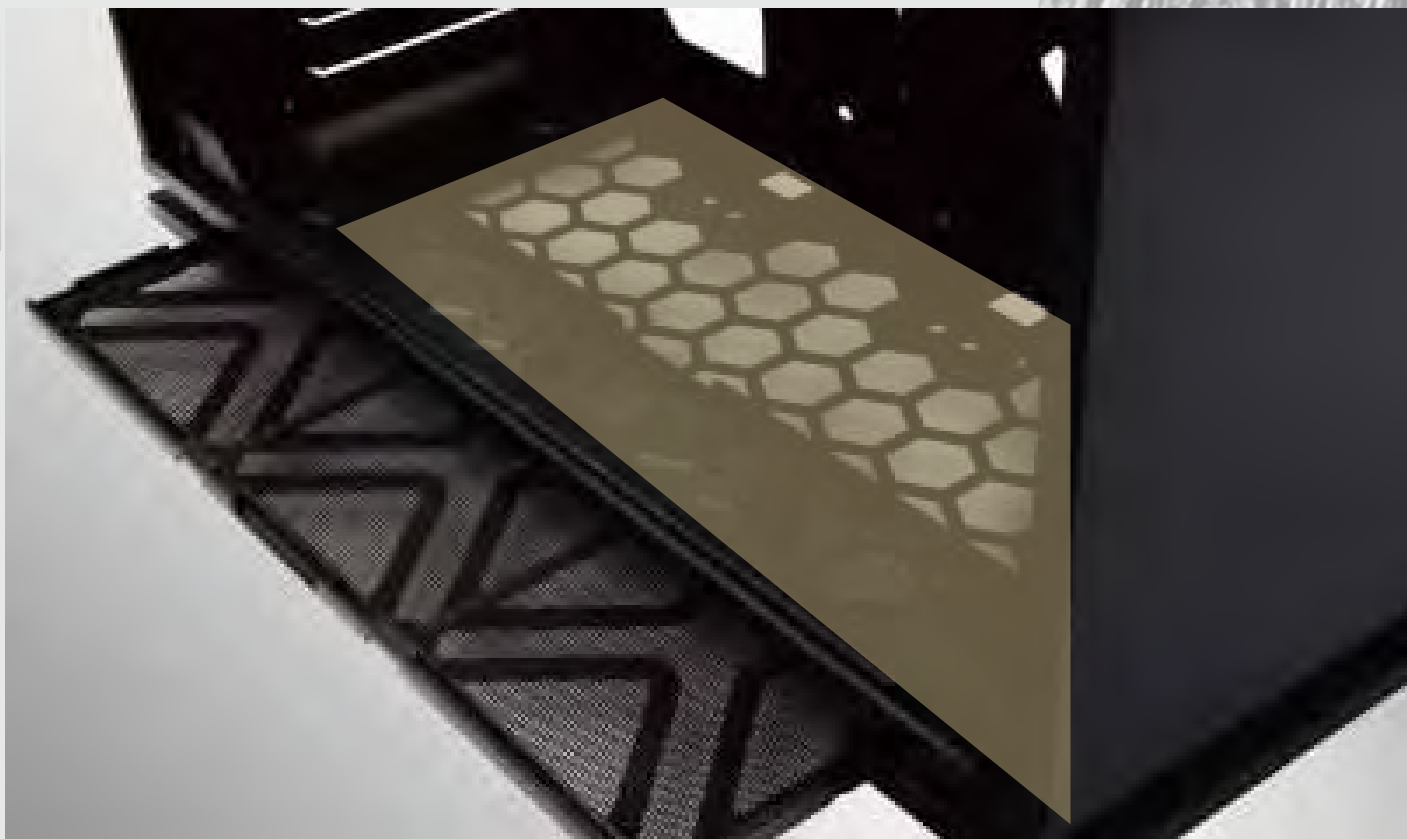


Fan / Liquid Cooling Radiator Installation

Parts Required: Water-cooling System Washer

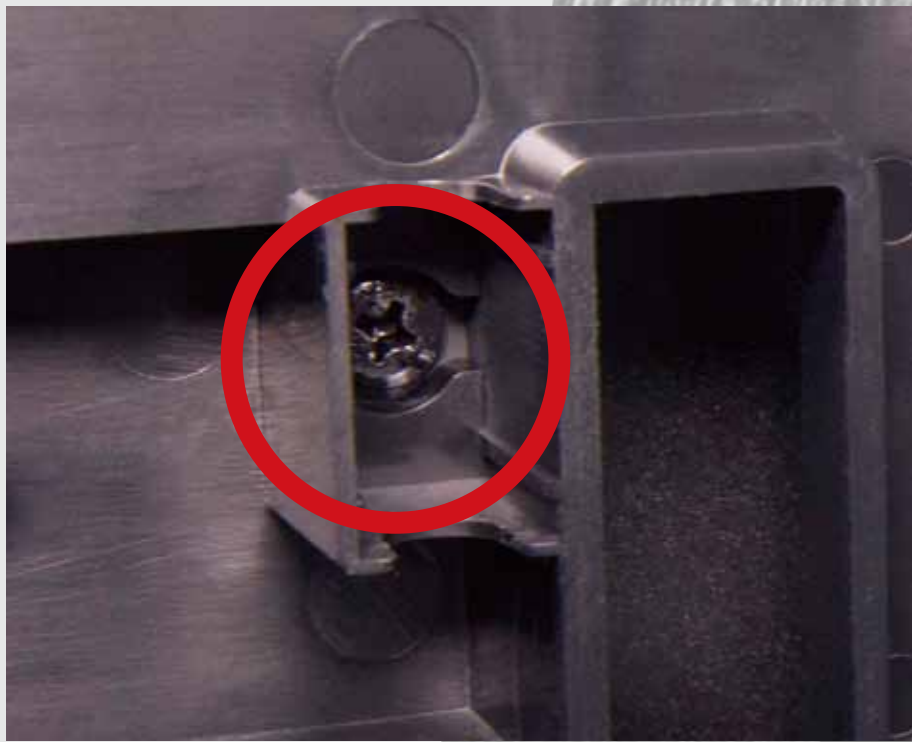


7



8

Bottom Fan Installation



* Please remove the rubber foot stands, and then loosen the screws on top.



Completing Installation

Parts Required:
Cable Ties

9

Notices and Warranty

◆ Notices

1. Please follow the user manual for installation.
2. When installing the computer components, please use the antistatic precautions to prevent ESD (electrostatic discharge) damage. This can cause injury to the installer and/or damage to the machine. Incorrect installation may burn motherboard and other system components.
3. To avoid any damages, please do not use this product for any other purpose than its intended use.
4. Any modifications may damage the product.
5. Please remove all internal devices before shipping or moving.
(Including power supply, hard drive, CD-ROM, motherboard and CPU, etc)

◆ Warranty

- * For more detailed warranty information, please visit In Win retail website at www.in-win.com.
- * The actual product is subject to change without prior notice. In Win Development Inc. reserves the right to make final modifications.



CONTEMPORARY & INNOVATIVE
www.in-win.com

Copyright © 2017 In Win Development Inc. All Rights Reserved.