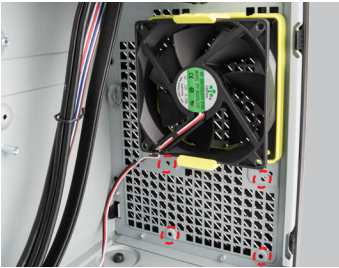
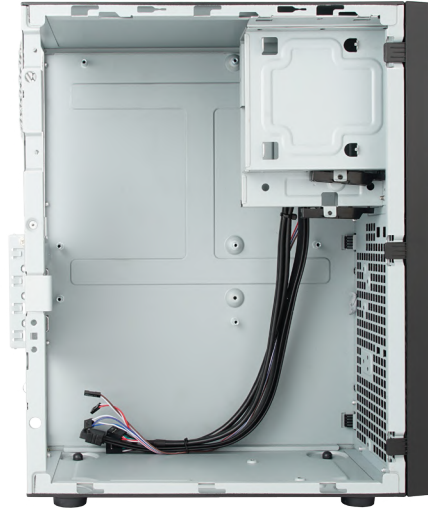
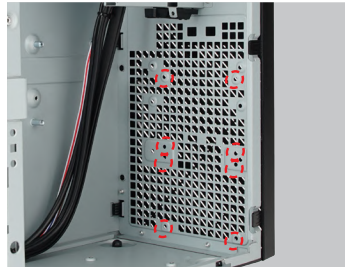


# CP SERIES mATX CHASSIS

15.5L SMALL FORM FACTOR



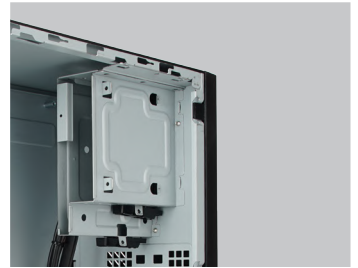
2.5" x 1 + 90mm Fan x 1



2.5" x 2



3.5" x 1



## Features

### Compatibility Standards

Efficiently utilizes its compact size with a 15.5 liters chassis, supporting m-ATX motherboards, ATX power supplies and full height expansion cards.

### Flexible Capacity Configuration

Accommodates 1 x slim ODD, 1 or 2 x 3.5" HDDs, 2 or 3 x 2.5" HDDs, and even two 90mm fans! It offers exceptional flexibility and scalability for enhanced multi-function applications!

### Superior Performance

Supports 4 full height PCI-E slots, so be sure to exploit the configurable options that they offer to harness the maximum performance at different component levels.

### Optimal Airflow

Optional 90mm front fan and 90mm rear fan to optimize airflow and achieve amazing thermal solution.

**Tool-Free Slim ODD/FDD Bays, Optional Front Fan Holder, and Side Panel Clips**

**Supports Micro-ATX Motherboard**

**Compatible with Standard ATX Power Supplies**

**CP** SERIES  
mATX CHASSIS

15.5L SMALL FORM FACTOR



## Specifications

<b>Case Size</b>	S.F.F. Slim Chassis (Ultra Small Form Factor)
<b>External Drive Bays</b>	Slim ODD x 1 (9.5mm Thickness), 3.5" x 1 (Removed the FDD Clip to Mounting the 3.5" HDD)
<b>Internal Drive Bays</b>	• Option 1: 3.5" x 1, 2.5" x 1 • Option 2: 2.5" x 3 • Option 3: 2.5" x 2 + 90mm Fan x 1
<b>Front Ports</b>	USB 3.0 x 2 + USB 2.0 x 2, HD Audio, Optional Type-C x 1
<b>Dimensions (H x W x D)</b>	350 x 160 x 276 mm (15.5L)
<b>w/o Front Panel</b>	13.8" x 6.3" x 10.9"
<b>MB Form Factor</b>	Micro-ATX, Mini-ITX
<b>I/O Expansion Slots</b>	Full Height Slot x 4 (Up to 260mm Length)
<b>Power Supply</b>	Standard ATX 12V, PS2 (Up to 140mm Length)
<b>Thermal Solution</b>	• Intel Certified TAC 2.0 • Supports 90 mm Rear Fan • Supports 90 mm Front Fan (Occupied 2.5" x 1)
<b>Safety</b>	Meets RoHS, CE and FCC Class B Requirements
<b>Security</b>	Padlock Loop / Kensington Slot
<b>Optional</b>	• 3.5" to 2.5" HDD/SSD Bracket • 90 mm Rear Fan • 90mm Front Fan and Tool-Free Fan Holder • Type-C • Tool-Free Side Panel • Tool-Free Slim ODD/FDD Bay Clips • Internal Speaker • Chassis Intrusion Switch

\* The actual product is subject to change without prior notice. In Win Development Inc. reserves the right to make final modifications.